



# Apply Now

**A collaboration of Pragjyotish College and  
Mirai Japanese Learning Centre**

**Japan plans to hire 8 lakh foreign workers through its  
Specified Skilled Workers (SSW) program in the next 5 years.  
Would you be the one to take advantage of this unique  
opportunity?**



## **HOW WE CAN HELP YOU?**

- Japanese language skills (N5 to N3)
- Japanese Culture and Etiquette
- Technical Skills
- Counselling
- Placement Assistance with Japanese Companies

**Classes starting  
August 2024**



For further details, contact:

+91 6000733613

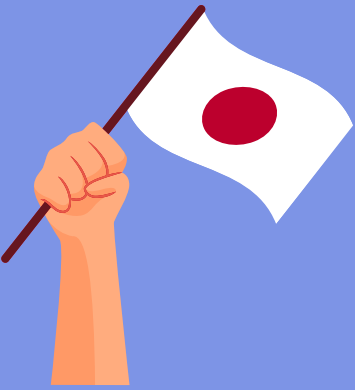
[www.miraijlc.org.in](http://www.miraijlc.org.in)



Scan the QR code and  
apply now for the first  
batch of SSW from Mirai

# WHY WORK IN JAPAN?

Japan is known as one of the safest industrialized countries in the world. The country is renowned for its high quality of life and impressive living standards. Here are some reasons why.



## A peace loving country

Japan was ranked 9th position in a list of 163 countries in the Global Peace Index in 2023. The Global Peace Index is an annual report by the Institute for Economics and Peace. It measures the overall levels of peacefulness in a country with emphasis on Safety and Security.

## Low Crime Rate

Japanese society has had a consistently low level of reported crimes. The low levels of reported crimes have remained so for the last twenty years during which crime levels have in fact decreased steadily. Also, Japan has strict gun control laws in place.



## Strong Labour Laws

Japan has enacted a number of labour laws to protect the rights and interest of foreign workers in Japan. Discrimination of foreign workers because of their nationality is prohibited in Japan as per the Labour Standards Act.

## One of the best healthcare systems

Modern and accessible, the Japanese healthcare system is renowned the world over. It is relatively inexpensive. Japan has universal public healthcare: it's a legal requirement for all Japanese citizens to have the health insurance provided by the state



## Public Infrastructure

Japan has a highly developed physical infrastructure. Incorporating advanced technologies, the roads, railways etc. have all been designed to be considerate and sensitive to other people's needs so as not to cause any inconvenience to others.





# WHY CHOOSE MIRAI?

Mirai Japanese Learning Centre is the pioneer institute in North East India providing top notch Japanese language and specialized skills for people of all backgrounds.

Our motto is 'Learn Language Lead Life'

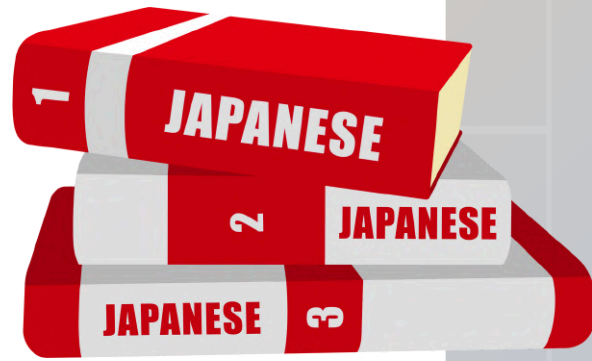


## We provide counselling

Our expert counsellors help students choose the right course as per their individual needs. From exploring career opportunities in Japan to providing guidance on Japanese culture and etiquette, our counsellors are people our students can rely on.

## Japanese language training

Once selected, students are admitted into 5 modules - JLPT N5, JLPT N4, SSW N5, SSW N4, and SSW Mains. These modules are carefully designed to help students progress from basic to advanced levels of Japanese language proficiency.



## We help our students absorb the culture and etiquette

Students undergo intensive training in Japanese language and culture to prepare them for the challenges of working in a Japanese company. This also covers cultural nuances and business etiquette that are essential for success in a Japanese work environment.

## Best placement services

Mirai JLC provides extensive guidance to our students during the placement process in various Japanese companies including visa applications, work contracts, and other legal documentation.

We are associated with PWO Venture, SK Technology and National Skill Development Corporation (NSDC).



Would you like to know more about us?

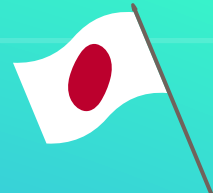
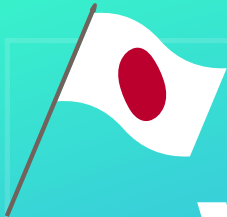
Not to worry. You can reach us at Mirai Japanese Learning Centre with any questions at the following details:

 [www.miraijlc.org.in](http://www.miraijlc.org.in)

 +91 6000733613

 [miraijlcguwahati@gmail.com](mailto:miraijlcguwahati@gmail.com)





# WHAT IS SSW?

SSW stands for the Specified Skilled Worker program. It is a program by Japan to hire foreign workers to work in its country under various sectors.



## Why is Japan looking for foreign workers?

Japan is facing a labour shortage. This is because Japan has an ageing population with a declining birth rate. To keep the country running, Japan is looking to hire around 8,00,000 foreign skilled workers in the next 5 years.

## What kind of jobs are there in SSW?

There are 12 sectors that are open to jobs including Aviation, Accommodation, Agriculture, Nursing care, Information Industries, Construction, Shipbuilding, Automobile repair and many more.



## How do I become an SSW worker?

For people outside Japan, you have to:

1. Pass a Japanese language test and a skills proficiency test.
2. Sign a contract with a company.
3. Complete the immigration formalities
4. Live and work in Japan

## Am I eligible to become an SSW worker? Do I need to learn Japanese?

You are eligible if you are 18 years and above with considerable degree of knowledge or experience belonging to a specific sector.

Yes, this program requires you to be proficient in Japanese language as you will be living and working in Japan.



## I have so many questions and doubts. What should I do?

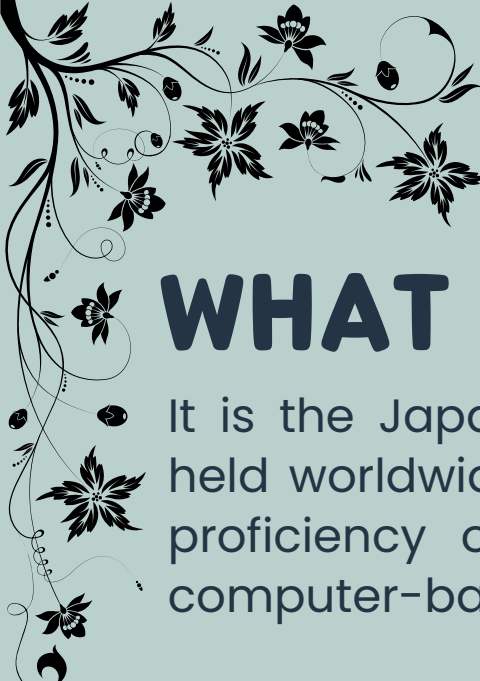
Not to worry. You can reach us at Mirai Japanese Learning Centre with any questions at the following details:

 [www.miraijlc.org.in](http://www.miraijlc.org.in)

 +91 6000733613

 [miraijlcguwahati@gmail.com](mailto:miraijlcguwahati@gmail.com)





# WHAT IS THE JLPT EXAM?

It is the Japanese Language Proficiency Test, a test held worldwide to evaluate and certify the Japanese proficiency of non-native speakers. The JLPT is a computer-based test with multiple choice questions.



1

## WHY IS IT IMPORTANT?



If you are looking to work in Japan, then getting the appropriate JLPT level could help you to get points while applying for immigration to Japan.

2

## WHO CONDUCTS THE EXAM?

For administering the test outside Japan, the Japan Foundation teams up with various local institutions. Whether one is looking to travel or work in Japan, anyone with an interest in the Japanese language can take the test.

3



## WHEN IS THE EXAM HELD?

The JLPT is held twice a year. Usually the tests are scheduled in the months of July and December.

4

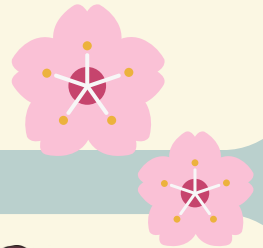
## WHAT ARE THE LEVELS?

As per the present practice, there are 5 levels in the JLPT: N1, N2, N3, N4 and N5. N4 and N5 are for basic Japanese learned in the classroom. N3 is an intermediate level while N1 and N2 are advanced levels.

5

## WHAT ARE THE THREE ELEMENTS OF THE EXAM?

- a) Reading,
- b) Listening, and
- c) Language Knowledge (Vocabulary/Grammar)



6

## WHAT LANGUAGE LEVELS ARE BEING TAUGHT AT MIRAI JLC?

At present, N5 to N3 language levels are being taught at Mirai JLC.

